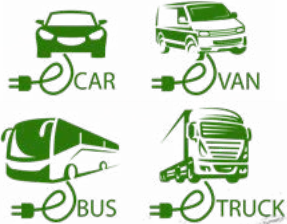


# Steel PV Power®

Combine the Power of Steel with the Power of PV!

best for  
e-mobility



*zinc coating*



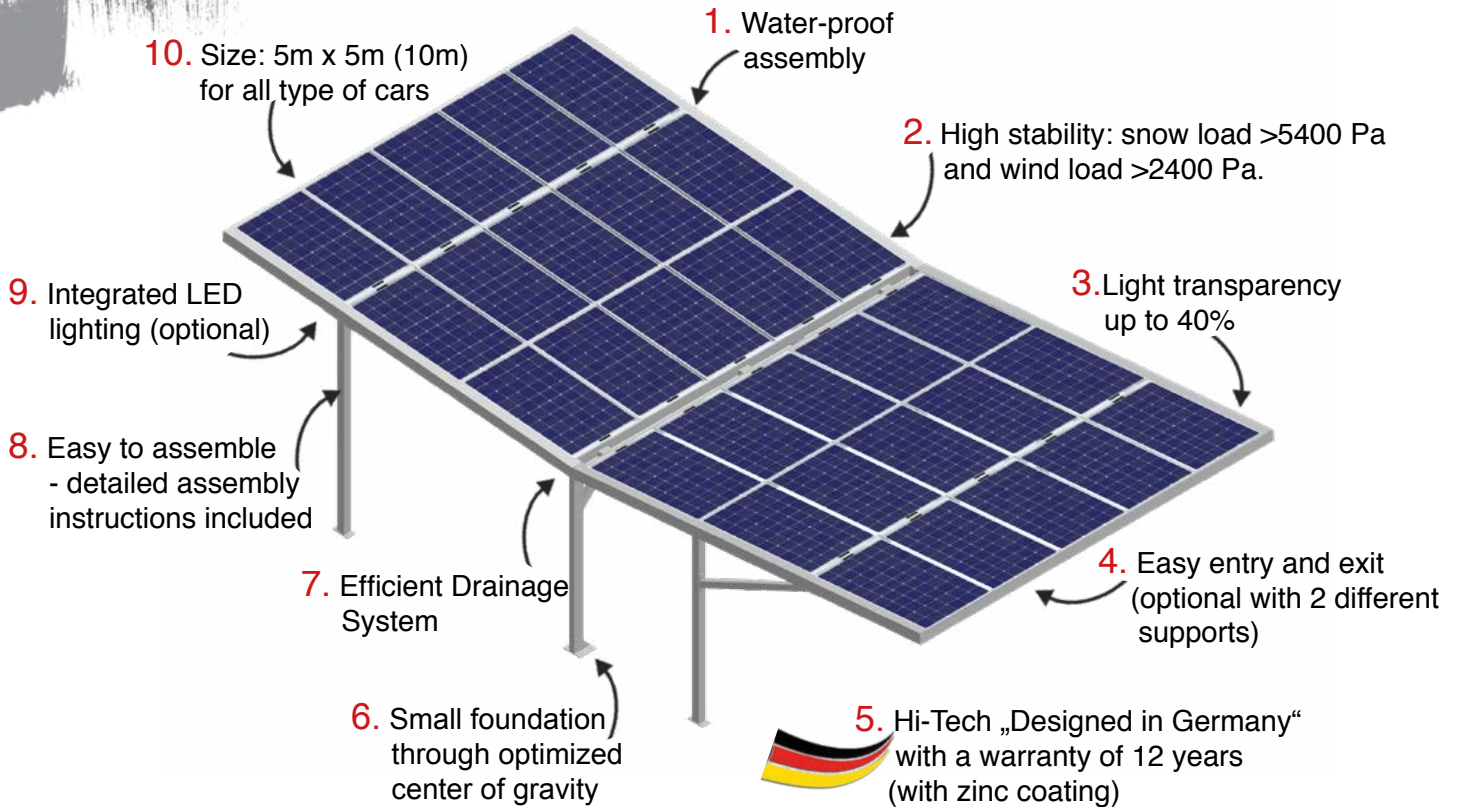
*two layer painting*

Long-Life Steel Protection:

- 2-layer painting
- or zinc-coating

# Ultra Stable Design meets high Power Generation

## 10 Highlights (USPs) of our Steel PV Power® Carports



### Steel Structure

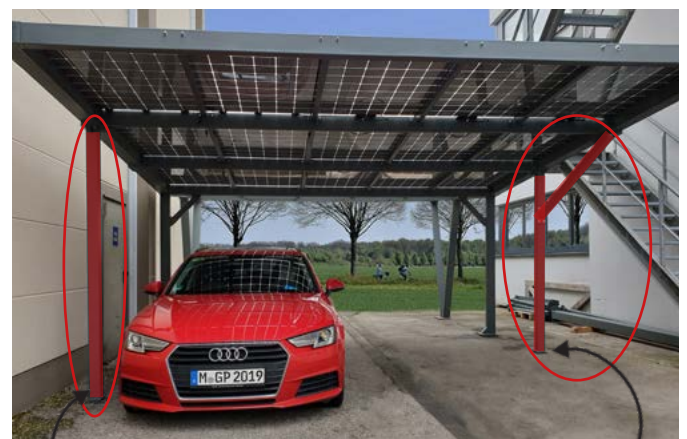
Construction Steel with welded connections.  
Two Support Combinations with extra stable screws.

### Material Protection

Standard Steel Protection are 2 layers of paint:

1. Rust primer
2. Rust protection
3. Polyuretan finish: RAL 7043

Optional: Hot zinc coating with 12 years guarantee



Support 2

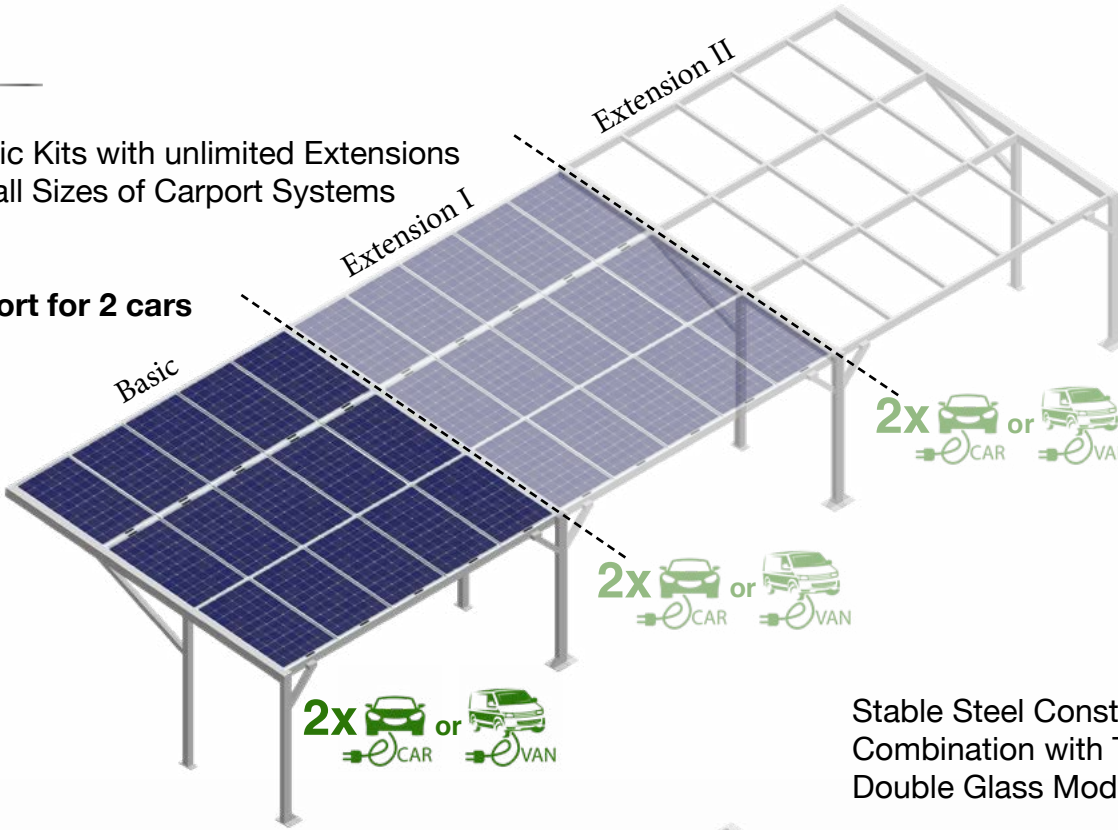
**optional with 2 different supports**

Support 1

# Kit

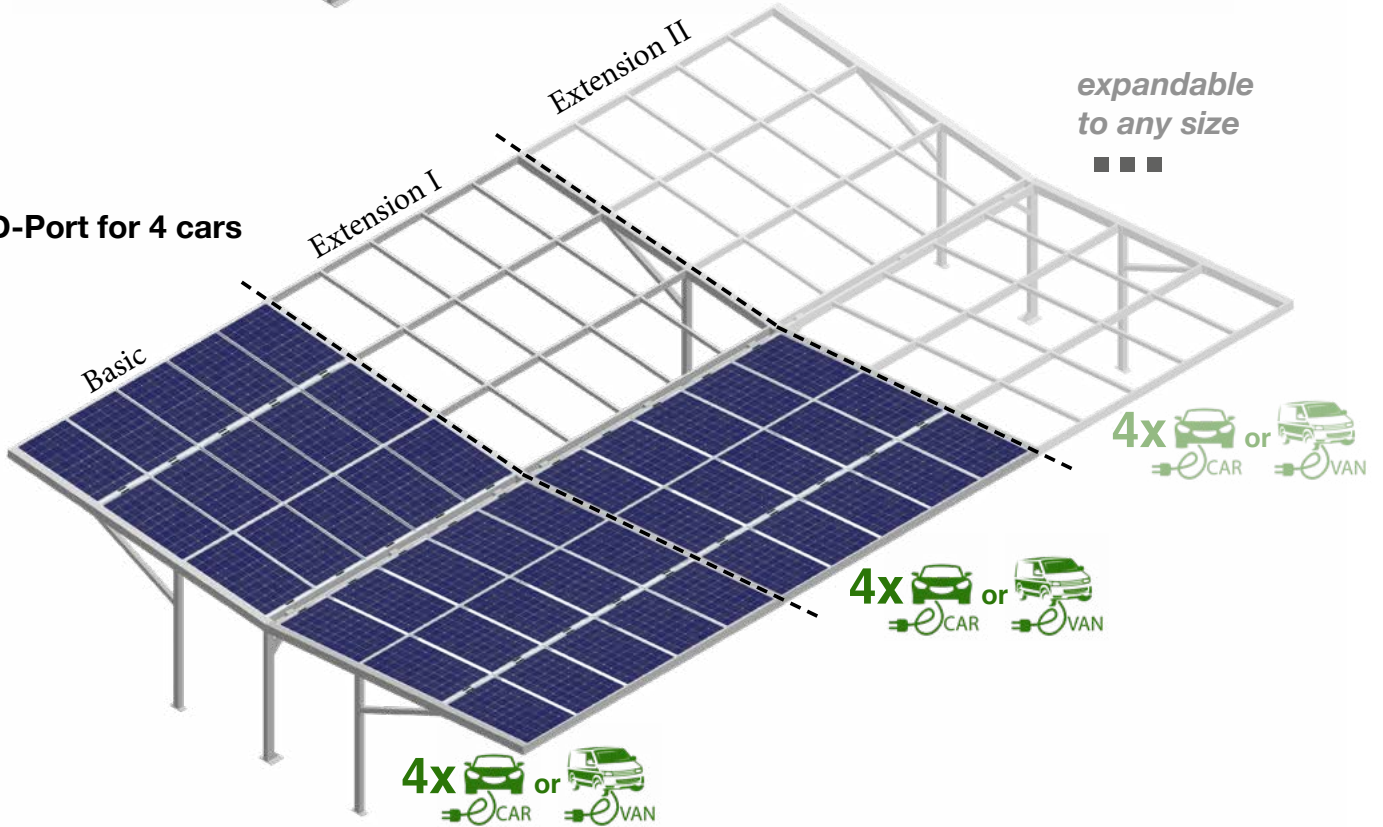
Basic Kits with unlimited Extensions for all Sizes of Carport Systems

## S-Port for 2 cars



Stable Steel Construction in Combination with Transparent Double Glass Modules

## D-Port for 4 cars



All our carports can be extended through optimized connection parts. It is also possible to change the orientation of the carport. In this case, the longer pillars have to be mounted on the rear side of the carport and the U-pillars have to be turned around.



## Easy mounting without crane

Simple connection of the individual steel girders through pre-drilled holes and optimized screw connections



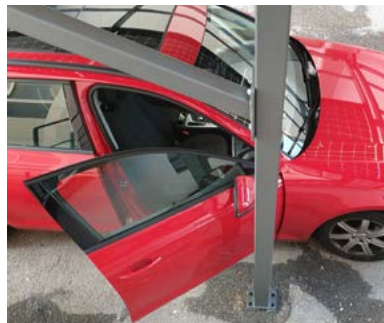
## Stable Support with Screws

The supports have optimized integrated footrests that keep the carport stable even without anchoring. However, after aligning the carport, it should be anchored to the foundation with appropriate screws for safety in the ground.



## Optimal arrangement of the support profiles

Our supports are at the right position: From static point of view optimum hold but also when getting in and out of the car.



## Watertight Module Mounting

For more information of the module mounting ask for our **Premium Module Mounting Instruction**



upper aluminium profile with integrated rubber lips

(K)

Edge profile with integrated rubber lips

(F-R)

lower rubber profile

(K-U)

4.5 cm

lower rubber profile

(F-R-U)

3.5 cm

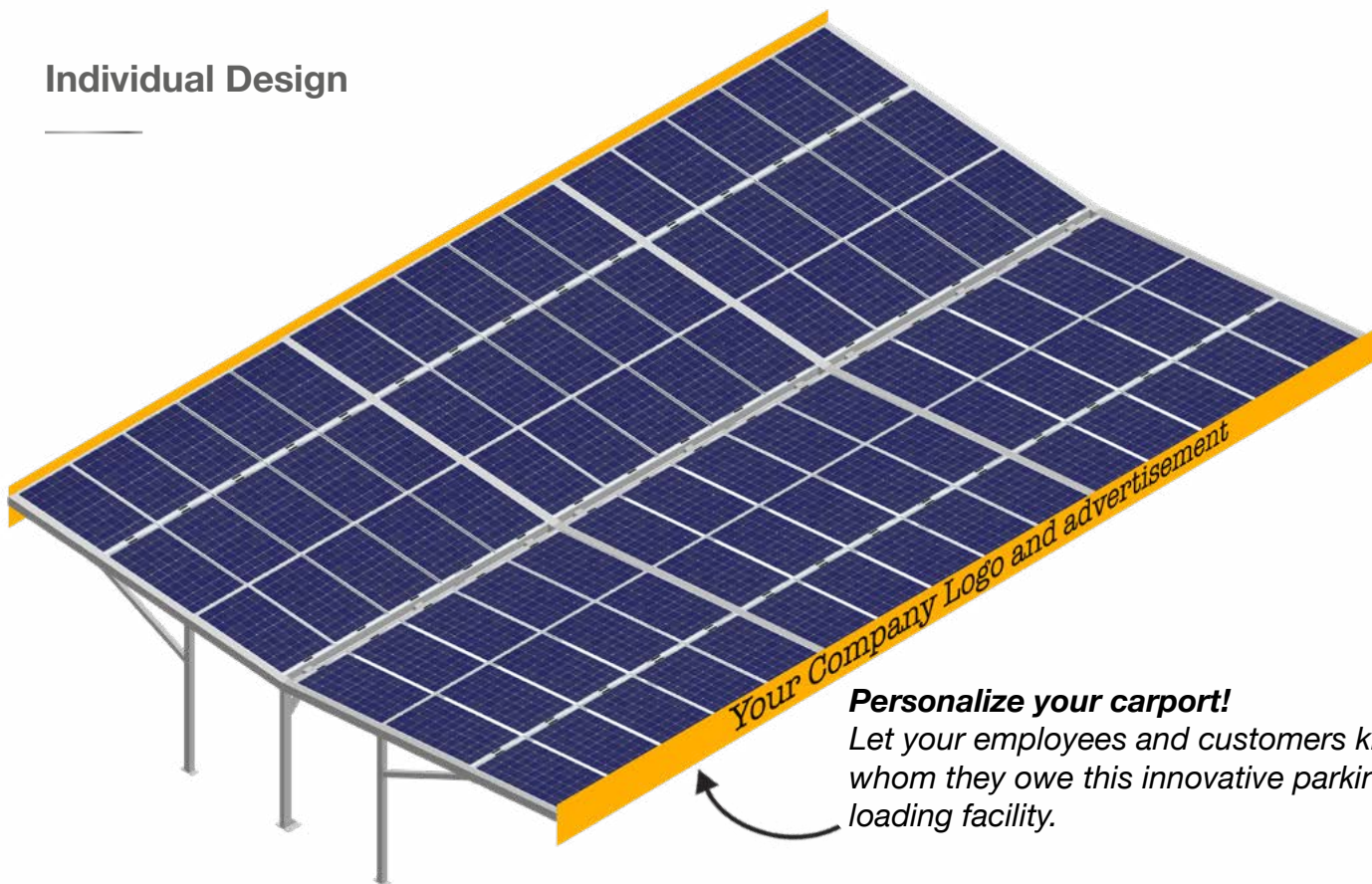
„DachDicht“  
Sealing compound

(W)



## Individual Design

---



### **Personalize your carport!**

Let your employees and customers know to whom they owe this innovative parking and loading facility.

**Lettering available on request in different colours and designs!**

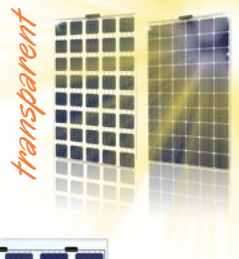
## Powerful LED Lighting (optional)

---

Premium High-Power LED strips protected in a stable profile made of anodised aluminium are a great option. They come with 5 year warranty: High Power in different light colours: 3.000. 4000 and 6.000 Kelvin (warm white to white cold). Reliable extra-low voltage with 24 Volt (protection against electric shock), IP 54 protection against humidity, dimmable, motion detector with presence control. Best in class quality driver with long service life.

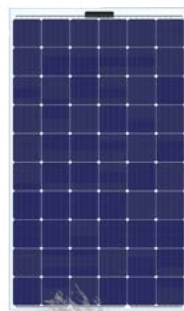


# Premium Double Glass PV Modules



## size I

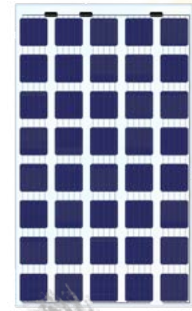
Certificates:



**M60**  
280 Wp



**Bifacial**  
**B60**  
310 Wp



**M40**  
195 Wp

### Electrical Specification

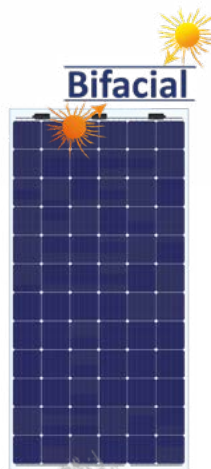
	M60 280 Wp	B60 310 Wp	M40 195 Wp
Maximum Power at (Pmax)	<b>280 W</b>	<b>310 W</b>	<b>195 W</b>
Optimum Operating Voltage (Vmp)	30.97 V	33.20 V	21.27 V
Optimum Operating Current (Imp)	9.04 A	9.82 A	9.17 A
Open Circuit Voltage (Voc)	38.65 V	40.01 V	26.47 V
Short Circuit Current (Isc)	9.65 A	9.82 A	9.61 A
<b>Module Efficiency</b>	<b>17.0 %</b>	<b>18.8%</b>	<b>11.9%</b>
Maximum System Voltage	1000 V DC (IEC)	1500 V DC (IEC)	1000 V DC (IEC)
Operating Module Temperature	-40 °C to +85 °C	-40 °C to +85 °C	-40 °C to +85 °C
Maximum Series Fuse Rating	20 A	20 A	20 A
Power Tolerance	0 ~ +5 W	0 ~ +5 W	0 ~ +5 W
<b>Dimensions [mm] , approx.</b>	<b>1658 x 992 x 5</b>	<b>1658 x 992 x 5</b>	<b>1658 x 992 x 5</b>

## size II

Certificates:



**M72**  
330 Wp



**Bifacial**  
**B72**  
370 Wp



**M50**  
240 Wp

### Electrical Specification

	M72 330 Wp	B72 370 Wp	M50 240 Wp
Maximum Power at (Pmax)	<b>330 W</b>	<b>370 W</b>	<b>240 W</b>
Optimum Operating Voltage (Vmp)	37.64 V	39.1 V	26.88 V
Optimum Operating Current (Imp)	8.76 A	9.47 A	8.93 A
Open Circuit Voltage (Voc)	47.05 V	47.9 V	32.68 V
Short Circuit Current (Isc)	9.35 A	10.16 A	9.44 A
<b>Module Efficiency</b>	<b>16.8 %</b>	<b>18.9 %</b>	<b>13.0 %</b>
Maximum System Voltage	1000 V DC (IEC)	1000 V DC (IEC)	1000 V DC (IEC)
Operating Module Temperature	-40 °C to +85 °C	-40 °C to +85 °C	-40 °C to +85 °C
Maximum Series Fuse Rating	20 A	15 A	20 A
Power Tolerance	0 ~ +5 W	0 ~ +5 W	0 ~ +5 W
<b>Dimensions [mm] , approx.</b>	<b>1980 x 990 x 5</b>	<b>1980 x 990 x 5</b>	<b>1980 x 990 x 5</b>

## Charging options

Ask for a special offer!



Charging Box



Charging Station Premium



# Steel Power

**Please contact us for an individual offer that meets your needs.  
We are looking forward to your message.**



**GridParity AG**  
*next generation photovoltaic*

Ohmstr. 7, 85757 Karlsfeld  
GERMANY

[www.gridparity.ag](http://www.gridparity.ag)

[info@gridparity.ag](mailto:info@gridparity.ag)

Tel: +49 (0) 8131 3307 560

Fax: +49 (0) 8131 3307 737



other products that might also be interesting for you:



PV Carports



PV Terraces



PV PowerWall



EPC



AgriPV

*aluminum or wood*